

SHOWER UNIT INSTALLATION INSTRUCTIONS

The shower bases are designed to be installed directly on a rough floor and against the wall studs. The wall panels are to be installed (usually over sheetrock) with adhesive (See Fig. 1).

Materials Supplied by Taylor:

- 10 oz. Cartridges of RTV Silicone Adhesive
- 6 oz. Cartridge of Color Coordinating Silicone Sealant
- "Perfect Bead" Tool / Instructions

Tools Required:

- Caulking Gun
- Belt Sander with 36 grit (coarse) belt
- Coarse file or "Stanley Shurform"
- Electric Drill with 1/4" bit
- Saber Saw with 10 to 14 tooth per inch blade or Carbide grit-edge blade
- Knife, Compass, Pencil and Plastic Spoon

Materials Required:

- Rubbing Alcohol or Lacquer Thinner
- Paper Towels
- Masking Tape

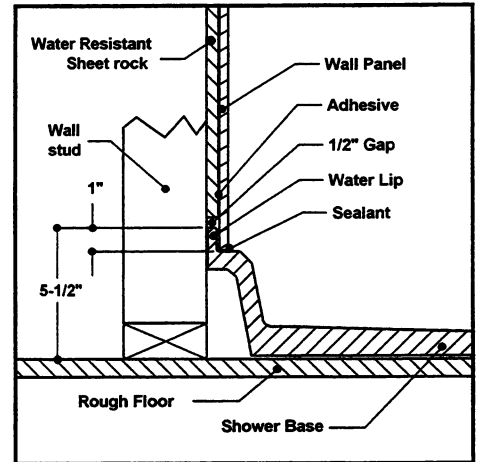


Fig. 1

- Step 1. Check the size of the opening against the required rough-in dimensions (See Shower Base Dimension Table). Check walls for plumb, squareness and flatness. Walls should be within 1/8" of true. Shim or trim opening, as required.
- Step 2. Finish all plumbing or electrical work inside the walls.
- Step 3. Locate, mark and cut a 6" - 7" diameter hole in the floor for the floor drain (See Fig. 2 or 3).
- Step 4. Install the drain hardware to the base and place the base into position (roughly 1/8" from the studs). Use a standard 2" shower drain available from plumbing suppliers and hardware stores. Note: The floor must be level to within 1/16" per 24". If the floor cannot be leveled, the shower base may be leveled by bedding in plaster or loose mortar. If the base is not properly leveled, there will be problems with the later installation of the wall panels and/or shower enclosures or doors.
- Step 5. Mark off the interior of the shower base and cut a piece of cardboard from the shipping carton and place it in the bottom to protect the base during installation.
- Step 6. Install 1/2" water-resistant sheetrock, leaving a 1/2" gap above the "Integral Seal Lip" (See Fig. 1) to prevent water damage to the wall should the sealant fail.
- Step 7. Test fit the back panel (The larger "Left" panel if a neo-angle shower). Note: The panels are marked either right, left or back and indicate which end is up. It should fit with a maximum clearance of 1/4" on each side and 1/8" against the shower base. If necessary, sand down the unexposed edges to fit. A belt sander with a 36 grit belt works well. Clean the edges with solvent and wipe the dust from the back of the panel.

- Step 8. Quickly apply adhesive directly to the sheetrock in heavy 3/8" diameter beads (two tubes will be required for each wall panel). The adhesive "skins" over quickly and excessive "skinning" can reduce the bond to the panels. Beads should be placed within 3" of the panel perimeter, and in a zig-zag pattern on 8" centers (shown by the dashed line in Fig. 4). Note: For the left panel of the neo-angle shower put an additional bead near the outer edge of the panel to provide additional support for the shower enclosure hardware. Place the wall panel into position and press firmly into the adhesive.
- Step 9. Place a side panel into position against the rear panel. The panel should fit within 1/8", if not, scribe and sand the unexposed edge to fit. If this panel is to be cut out for the valve, mark the location. Scribe a circle of the diameter required at each hole location. Drill a 1/4" diameter hole inside the circle and cut out the circle with a saber saw with a carbide grit-edge blade or a sharp 10 or 14 tooth per inch blade. Glue the panel as in "Step 8", except place an additional adhesive bead near the outside edge of the panel to provide support under the panel where the shower enclosure frame fastens to the wall.
- Step 10. Install the remaining wall panel in the same manner as Step 9.
- Step 11. Brace wall panels, as required, with scrap lumber. **CAUTION: DO NOT FORCE A PANEL TO FIT A BOWED WALL AS IT MAY BREAK**, furthermore, the resiliency of the panel can break the adhesive bond when the bracing is removed. Brace for 24 hours.

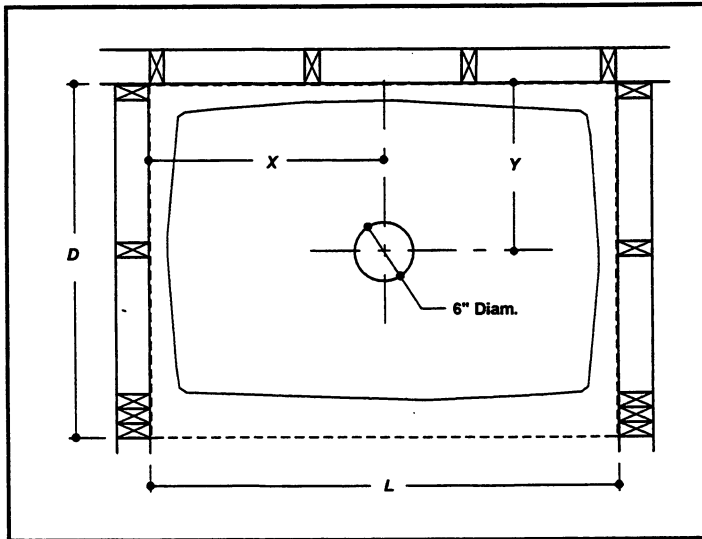


Fig. 2

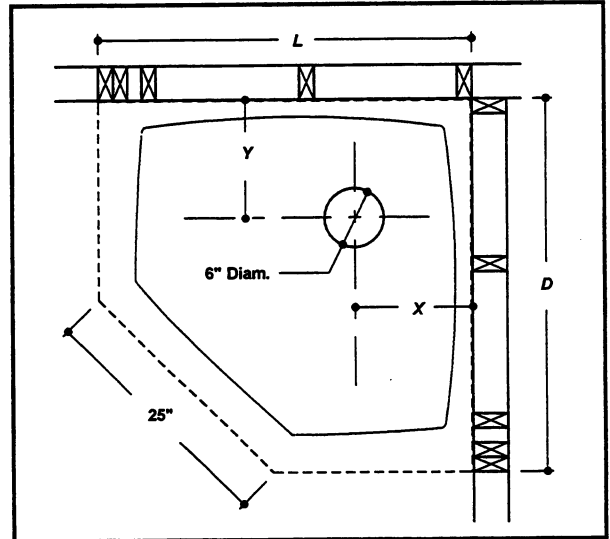


Fig. 3

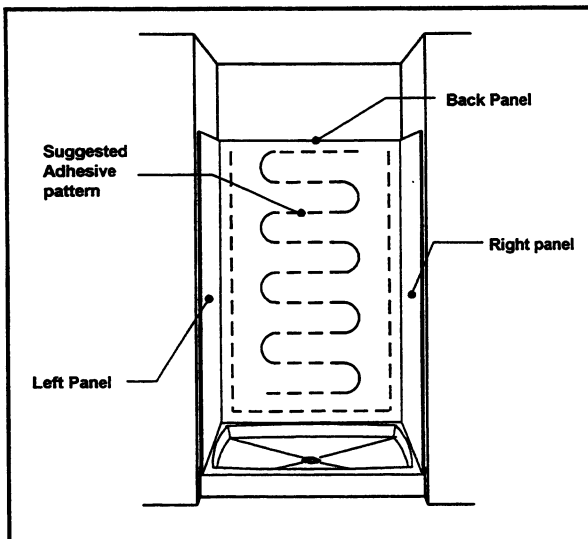


Fig. 4

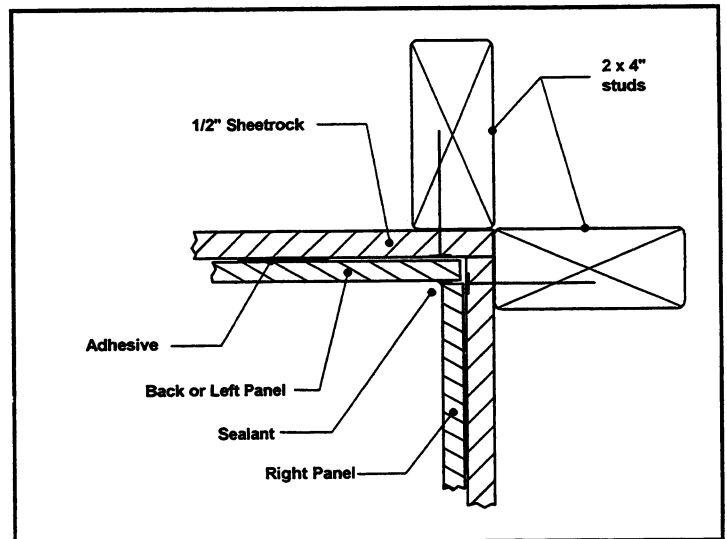


Fig. 5

Step 12. Remove the bracing and clean the joints with solvent. Make sure the joint is clean as excess adhesive or other foreign material can prevent a good bond or cause the silicone sealant to discolor. Apply a bead of silicone to the interior vertical joints forcing the silicone deep into the joint. Tool the joint within 5 minutes with the supplied "Perfect Bead" tool. Now do the horizontal joints between the walls and the base. The excess silicone that is squeezed out by the tool can be cleaned up most easily by waiting until the silicone has "set" (about 30 minutes), then scrape the excess "firm" silicone from the panels with a plastic spoon (the plastic spoon will not scratch the gel-coated surface of the panels or base, do not use metal). Allow the silicone to cure for a day, install the shower enclosure and plumbing hardware, and cut holes in the panels for any applicable accessories. Refer to Accessory Installation Instructions for installation of soap or shampoo holders and the job is finished.

Shower Base Dimension Table

MODEL NO.	ROUGH-IN DIMENSIONS			
	L	D	X	Y
SB36N	36-3/8"	36-3/8"	12"	12"
SB38N	38"	38"	12"	12"
SB42N	42"	42"	12"	12"
SB32	32-3/8"	32-1/4"	16-3/16"	16-3/8"
SB36	36-3/8"	36-1/4"	18-3/16"	17-1/8"
SB48	48-3/8"	36-1/4"	24-3/16"	17-1/8"
SB4832	48-1/4"	32-1/4"	24-1/8"	16-1/8"
SB4842	48-3/8"	42-1/4"	24-3/16"	21-3/8"
SB6032R	60-1/4"	32-3/8"	50"	16-1/4"
SB6032L	60-1/4"	32-3/8"	10-1/4"	16-1/4"

Shower Wall Dimension Table

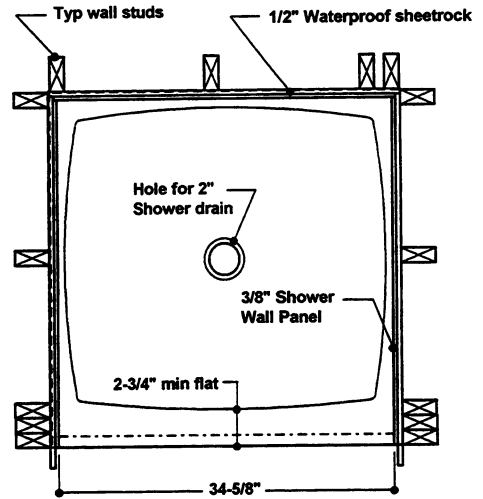
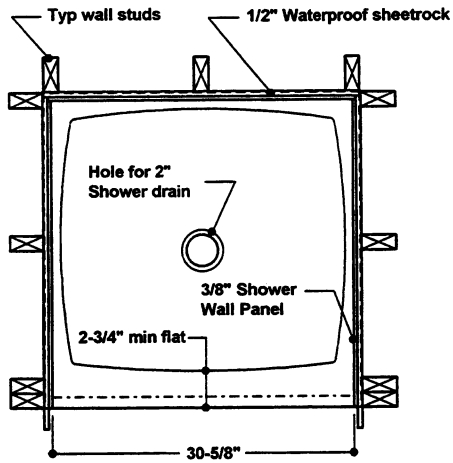
MODEL NO.	PANEL DIMENSIONS (all 3/8" thickness)		
	LEFT PANEL	BACK PANEL(S)	RIGHT PANEL
SW36N	35-5/8 x 72"	N/A	35-1/4 x 72"
SW38N	37-3/8 x 72"	N/A	37 x 72"
SW42N	41-3/8 x 72"	N/A	41 x 72"
SW32	31-1/4 x 72"	31-1/4 x 72"	31-1/4 x 72"
SW36	35 x 72"	35 x 72"	35 x 72"
SW48	35 x 72"	47 x 72"	35 x 72"
SW4832	31-1/4 x 72"	47 x 72"	31-1/4 x 72"
SW4842	41 x 72"	47 x 72"	41 x 72"
SW6032-3	31-1/4 x 72"	59 x 72"	31-1/4 x 72"
SW6032-4	31-1/4 x 72"	(2) 29-1/4 x 72"	31-1/4 x 72"

NOTE:

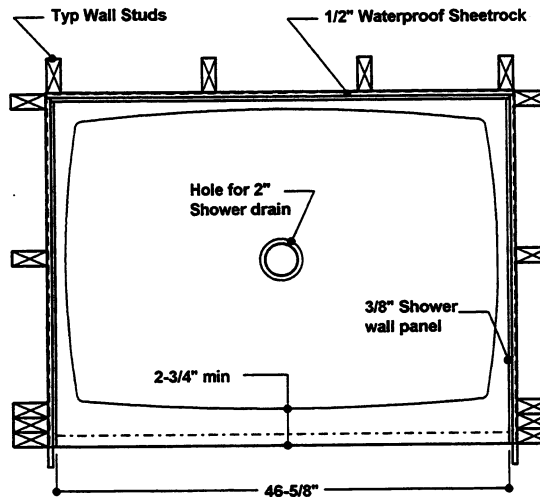
If minor scratches occur during installation, refer to our "Care and Maintenance Instructions" or "Buffing Out Surface Scratches". Any adhesive residue can be removed with Lysol Tub and Tile Cleaner or paint thinner.

CAUTION - Panels must be well supported for any cutting operations. Excessive vibration or flexing may crack the panel. Cut-out for soap or shampoo holders should be done after the panels are glued to the wall.

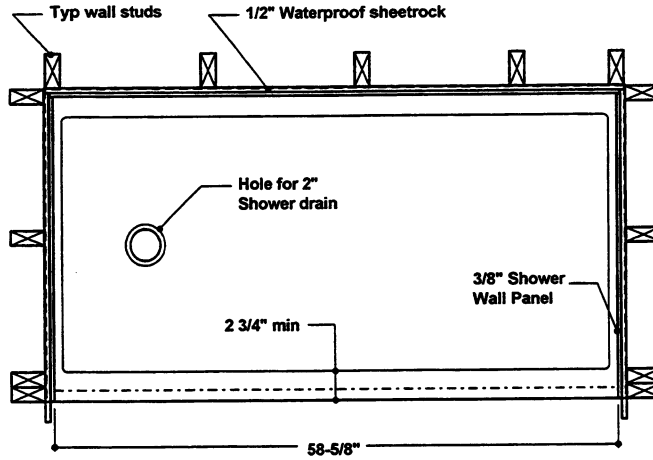
32" • 36" WIDE SHOWERS - DETAIL OF THRESHOLD
Shower Door Centerline Dimensions



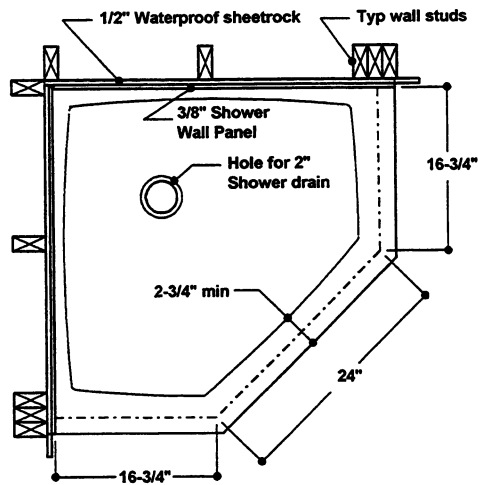
48" WIDE SHOWERS - DETAIL OF THRESHOLD
Shower Door Centerline Dimensions



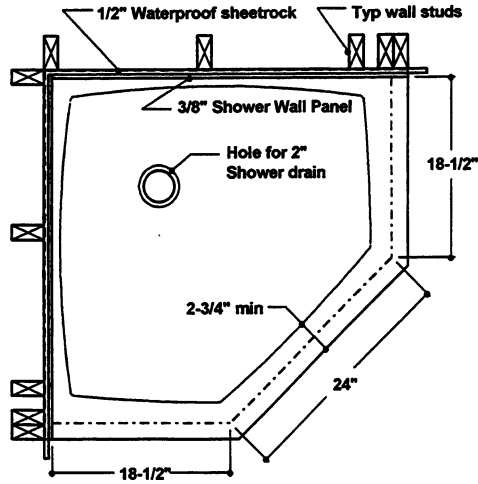
60" WIDE SHOWERS - DETAIL OF THRESHOLD
Shower Door Centerline Dimensions



36" NEO-ANGLE SHOWER - DETAIL OF THRESHOLD
Shower Door Centerline Dimensions



38" NEO-ANGLE SHOWER - DETAIL OF THRESHOLD
Shower Door Centerline Dimensions



42" NEO-ANGLE SHOWER - DETAIL OF THRESHOLD
Shower Door Centerline Dimensions

